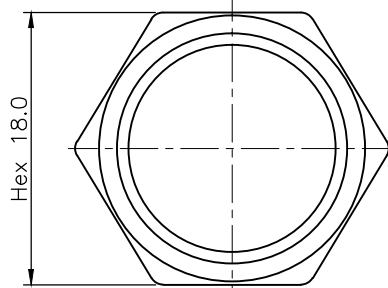
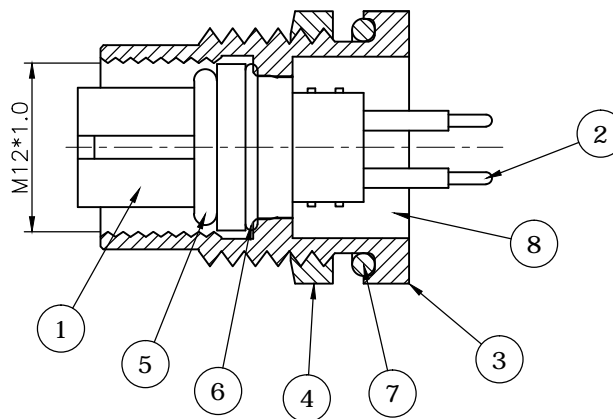
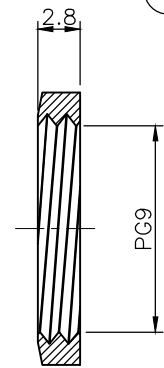


CUT OUT



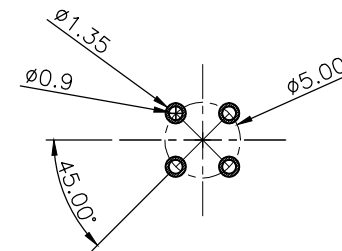
NUT



REV.	DESCRIPTION	DRAWN	DATE
1	INITIAL RELEASE	FROS	2016/11/25
2	ECR220421001	TIM	2022/04/21

SPECIFICATION:

1. Current Rating: 4A
2. Voltage Rating: 250V
3. Waterproof: IPX7
4. Operating temperature range: -40°C~+85°C



RECOMMENDED LAYOUT

8	EPOXY	EF400A & EF400B, Black
7	O-RING	EPDM, Black
6	O-RING	EPDM, Black
5	O-RING	EPDM, Black
4	NUT	Brass, Nickel plating
3	SHELL	Brass, Nickel plating
2	CONTACT	Brass, 10u" Gold plating over Nickel
1	HOUSING	PBT, UL94V-0, Black

NO.		PART NAME		DESCRIPTION	
UNLESS OTHERWISE SPECIFIED TOLERANCE					
UNIT:	DECIMAL	LINEAR	ANGLES		
	mm	X.	±0.50	±5°	
		X.X	±0.25	±3°	
	X.XX	±0.12	±1°		
DRAWN	Fros	2016/11/25	DRAWN NAME:		
CHECKED	Tim	2016/11/25	M12 A- Code Receptacle, 4Pin		
APPROVED	Ken	2016/11/25	Female Straight PCB Type Front Fastened		
SCALE	2/1	SHEET	1/1	SIZE	A4
PRODUCT NO.		216A-04FSF		FILE NAME	
				216A-04FSF_B_2	



WWW.ATTEND.COM.TW