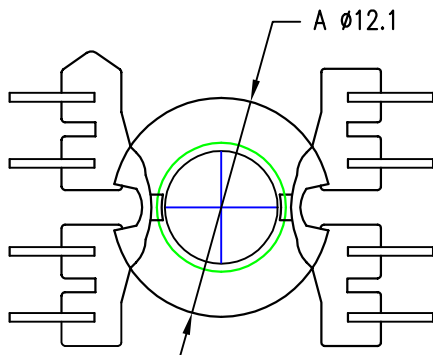
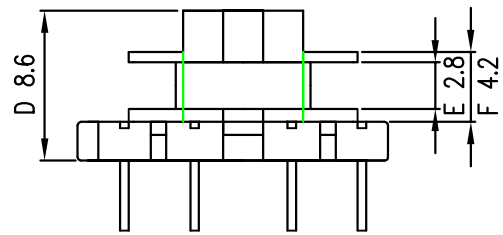




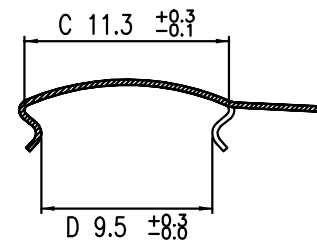
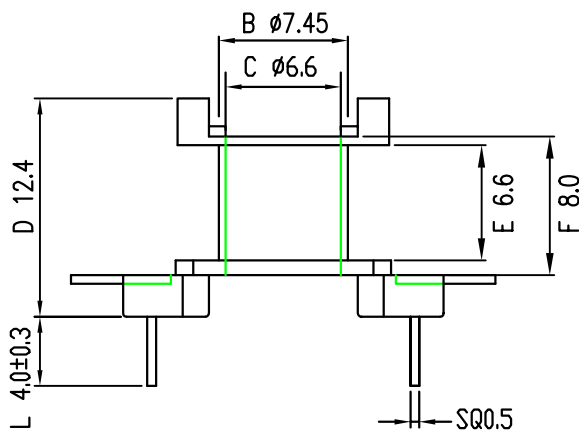
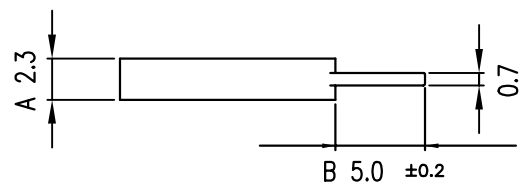
TPI NO. : 1506006



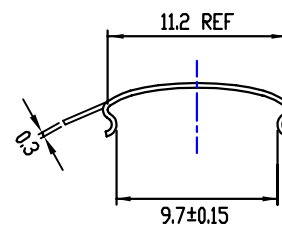
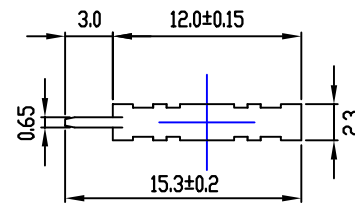
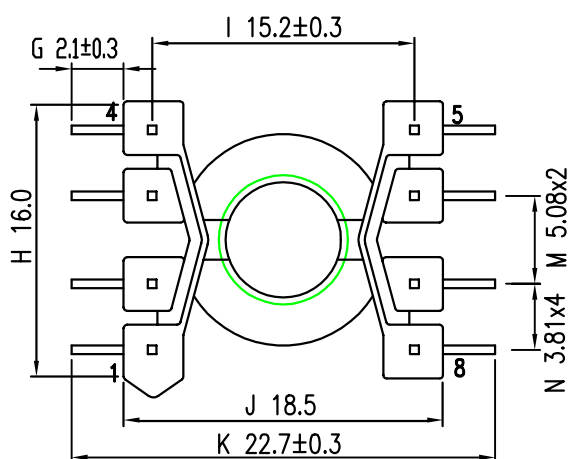
TPI NO. : 1506007



TPI NO. : 1506001



TPI NO.: 1506001-S



DATE	REVISED STORY	MODEL :	RM 6-8PIN (TPI NO.:1506006)
6/01'02	RELEASED THE NEW DRAWING SPEC.		RM 6-8PIN (TPI NO.:1506007)
			RM 6-CLAMP (TPI NO.:1506001)
			RM 6-CLAMP (TPI NO.:1506001-S)
		BOBBIN MATERIAL :	PET/GF UL94V-0
		PIN MATERIAL :	CP WIRE (TIN PLATED)
		CLAMP MATERIAL :	SK7 0.3t
		DATE :	June 01,2002
		REV.:	A
		TOLERANCE :	.XXX±0.08 .XX ±0.1 .X ±0.2