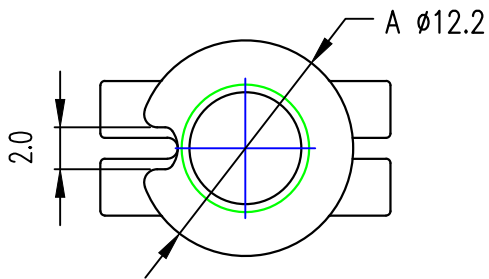
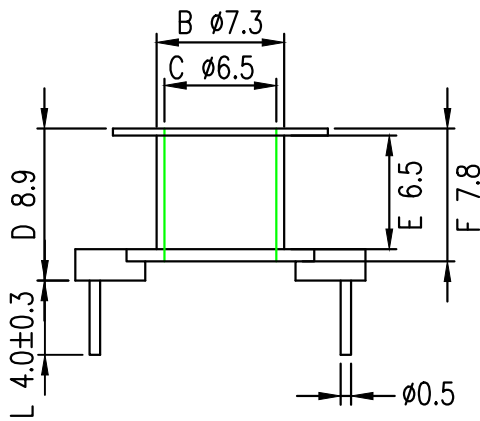
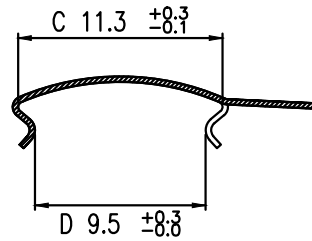
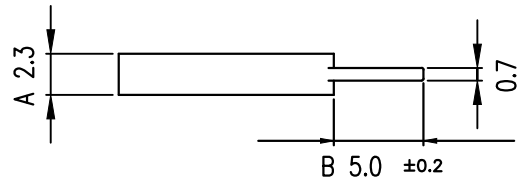




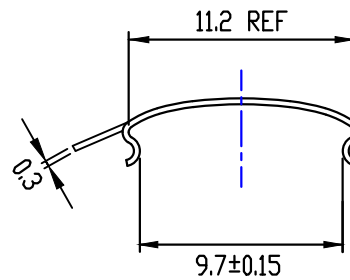
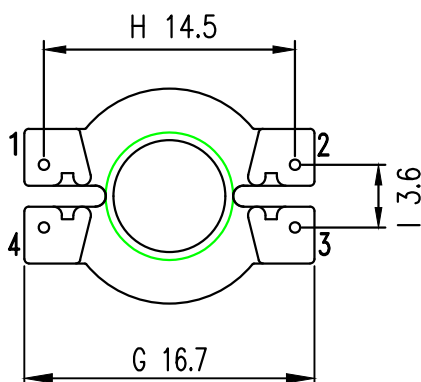
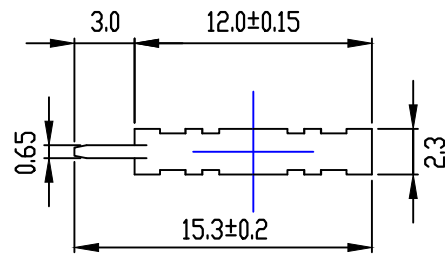
TPI NO. : 1506004



TPI NO. : 1506001



TPI NO.: 1506001-S



DATE	REVISED STORY	MODEL : RM 6-4PIN (TPI NO.:1506004) RM 6-CLAMP (TPI NO.:1506001) RM 6-CLAMP (TPI NO.:1506001-S)		
6/01'02	RELEASED THE NEW DRAWING SPEC.	BOBBIN MATERIAL : PHENOLIC RESIN UL94V-0		
		PIN MATERIAL : CP WIRE (TIN PLATED)		
		CLAMP MATERIAL : SK7 0.3t		
		DATE : FEB 05,2021	REV. : A	TOLERANCE : .XXX±0.08 .XX ±0.1 .X ±0.2