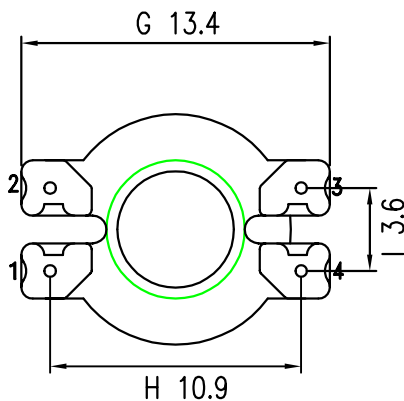
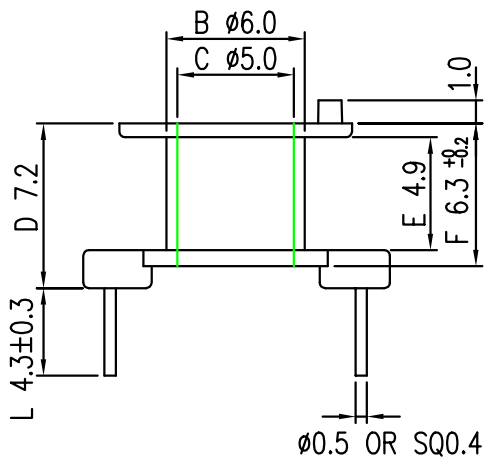
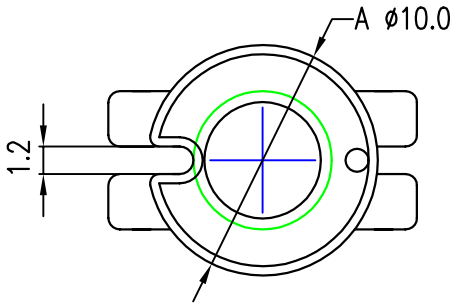
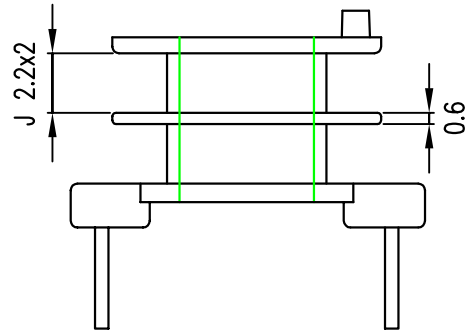




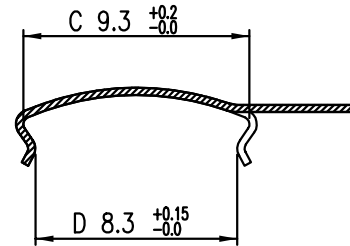
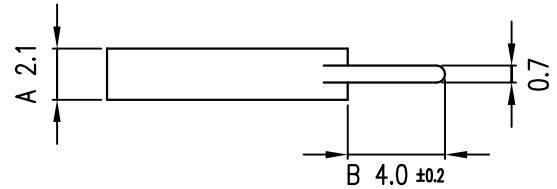
TPI NO. : 1505002



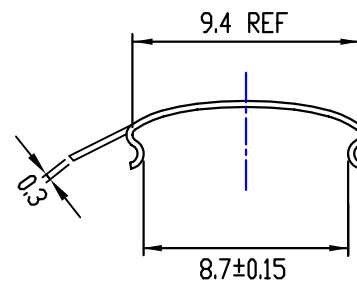
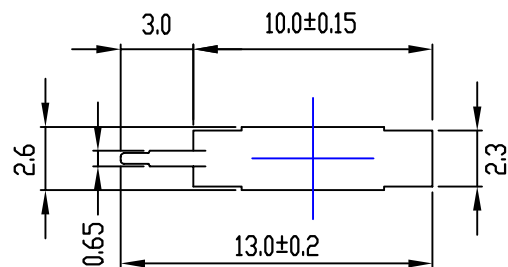
TPI NO. : 1505003



TPI NO. : 1505001



TPI NO.: 1505001-S



DATE	REVISED STORY	MODEL : RM 5-4PIN-1SEC (TPI NO. : 1505002) RM 5-4PIN-2SEC (TPI NO. : 1505003) RM 5-CLAMP (TPI NO. : 1505001) RM 5-CLAMP (TPI NO. : 1505001-S)		
6/01'02	RELEASED THE NEW DRAWING SPEC.	BOBBIN MATERIAL : PHENOLIC RESIN UL94V-0 PIN MATERIAL : CP WIRE (TIN PLATED) CLAMP MATERIAL : SK7 0.3t		
		DATE : June 01,2002	REV.: A	TOLERANCE : .XXX $\pm$ 0.08 .XX $\pm$ 0.1 .X $\pm$ 0.2