

MATERIAL AND FINISHES:

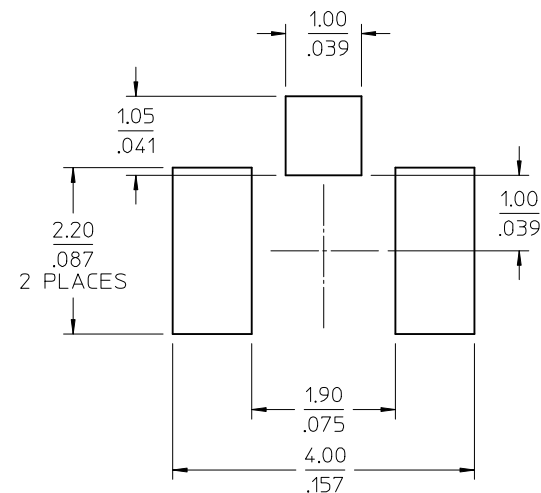
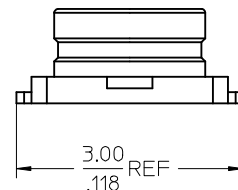
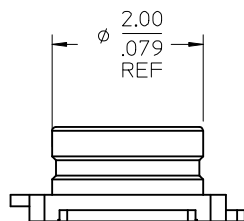
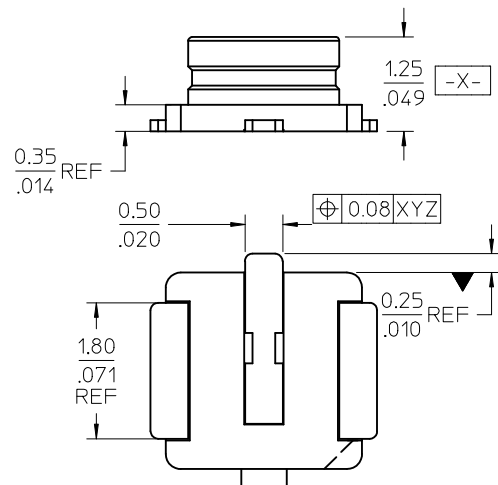
BASE: LCP
COLOR: IVORY

CONTACT: PHOSPHOR BRONZE(JIS 5191-SH)
PLATED GOLD

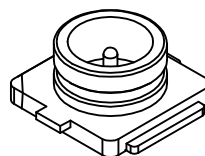
OUTER CONTACT PHOSPHOR BRONZE(JIS 5191-SH)
PLATED GOLD

NOTE : OPTION TO NEW TOOLING FOR IMPROVING ORIENTATION OF PACKING

WILL WITHSTAND REFLOW TEMPERATURE OF 265 DEG C ±5 DEG



RECOMMEND PCB LAYOUT

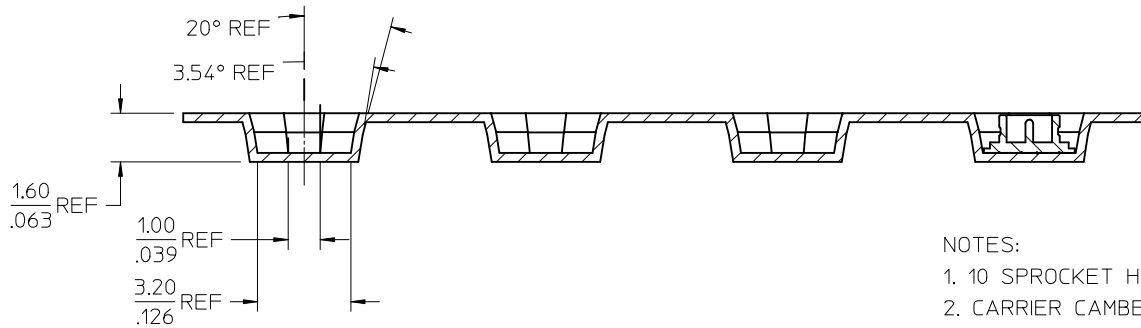
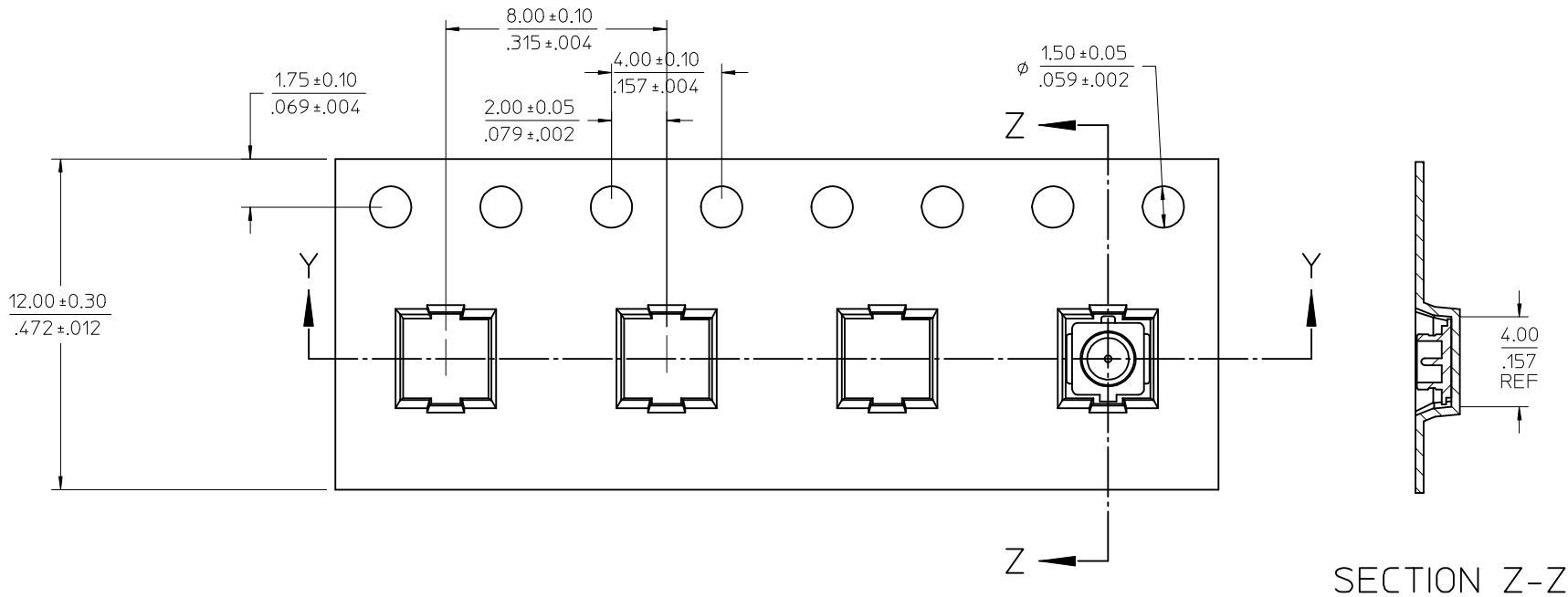


| | |
|---------------|-------------|
| PS-73598-0210 | PROD SPEC |
| SPECIFICATION | DESCRIPTION |

| | |
|------------|---------------------------------------|
| 73412-0114 | TAPE AND REEL (1K/REEL) |
| 73412-0112 | 73412-0110, 10 PIECES PER BAG IN TAPE |
| 73412-0110 | TAPE AND REEL (5K/REEL) |
| PART NO. | PACKAGING |

| | |
|---------------------|-----------------|
| CHG: ADDED PROD | QUALITY SYMBOLS |
| SPEC: | ▽=0 |
| EC NO: URF2009-0701 | ▽=0 |
| DRWN: JLEED2 | |
| CHKD: SSS | |
| APPR: JWIENER | |
| REV: B3 | |

| | | | | |
|--|-------------------|---|--------------|------------------------|
| GENERAL TOLERANCES (UNLESS SPECIFIED) | DIMENSION STYLE | SCALE | DESIGN UNITS | THIRD ANGLE PROJECTION |
| | MM/IN | | METRIC | |
| 4 PLACES ± --- ± --- | DRAWN BY DATE | MICRO COAXIAL CONNECTOR RECEPTACLE VERTICAL | | |
| 3 PLACES ± --- ± --- | DARRY 2003/1/27 | | | |
| 2 PLACES ± 0.25 ± --- | CHECKED BY DATE | | | |
| 1 PLACE ± 0.13 ± --- | JOHNSON 2003/1/27 | | | |
| ANGULAR ± 2 ° | APPROVED BY DATE | MOLEX INCORPORATED | | |
| | MISEN 2003/1/27 | | | |
| DRAFT WHERE APPLICABLE MUST REMAIN WITHIN DIMENSIONS | MATERIAL NO. | DOCUMENT NO. | SHEET NO. | |
| | SEE TABLE | SD-73412-011 | 1 OF 2 | |
| | SIZE C | THIS DRAWING CONTAINS INFORMATION THAT IS PROPRIETARY TO MOLEX INCORPORATED AND SHOULD NOT BE USED WITHOUT WRITTEN PERMISSION | | |



SECTION Y-Y

SECTION Z-Z

NOTES:

1. 10 SPROCKET HOLE PITCH CUMULATIVE TOLERANCE ±0.20mm
2. CARRIER CAMBER IS WITH 1mm IN 1000mm
3. MATERIAL : TRANSPARENT POLYSTYRENE ALLOY
4. ALL DIMENSIONS MEET EIA-481-1 REQUIREMENT
5. THICKNESS: 0.30±0.05mm
6. PACKING LENGTH PER 22" REEL (122.5 Meters)
7. COMPONENT LOAD PER 13" REEL (5,000 PCS)

| | | | | | | | | |
|--|-------------------------------|--|--|-----------------|-----------|---|------------------------|-----------|
| CHG: SEE SHEET 1 EC NO: URF2009-0701 DRWN: JLEE02 2009/06/01 CHKD: SSS 2009/06/01 APPR: JWIENER 2009/06/01 | QUALITY SYMBOLS ▽=0 ▽=0 | GENERAL TOLERANCES (UNLESS SPECIFIED) | | DIMENSION STYLE | SCALE | DESIGN UNITS | THIRD ANGLE PROJECTION | |
| | | | | MM/IN | | METRIC | | |
| | | | | DRAWN BY | DATE | TITLE | | |
| | | | | CHECKED BY | DATE | MICRO COAXIAL CONNECTOR RECEPTACLE VERTICAL | | |
| B3 | DESCRIPTION | ANGULAR ± 2 ° | | APPROVED BY | DATE | MATERIAL NO. | | |
| | | DRAFT WHERE APPLICABLE MUST REMAIN WITHIN DIMENSIONS | | MISEN | 2003/1/27 | DOCUMENT NO. | | |
| | | | | SEE SHEET 1 | | SD-73412-011 | | SHEET NO. |
| | | | | SIZE | | THIS DRAWING CONTAINS INFORMATION THAT IS PROPRIETARY TO MOLEX INCORPORATED AND SHOULD NOT BE USED WITHOUT WRITTEN PERMISSION | | |