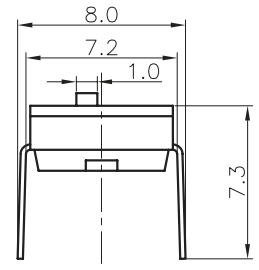
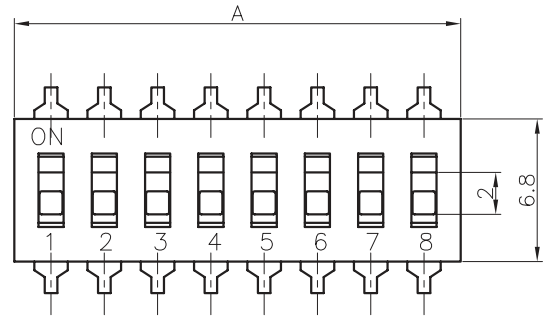


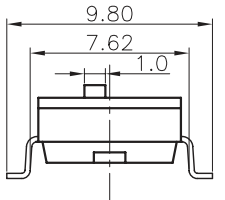
REV.	DESCRIPTION	DRAWN	CHECKED	APPROVED
A	NEW RELEASE	JLH 12/03/05		

NOTES:

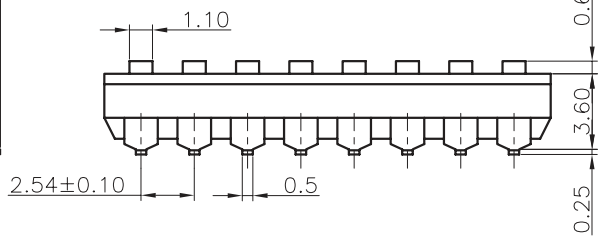
- Contact resistance: 30mΩ max.
- Dielectric withstanding voltage: 250 VAC 1minute.
- Insulation resistance: 1000 MΩ min.
- Temperature range: -20°C ~ +70°C.
- Product number code:



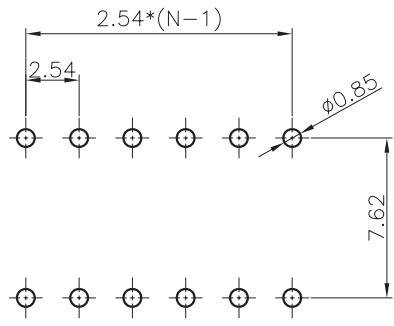
V/T TYPE



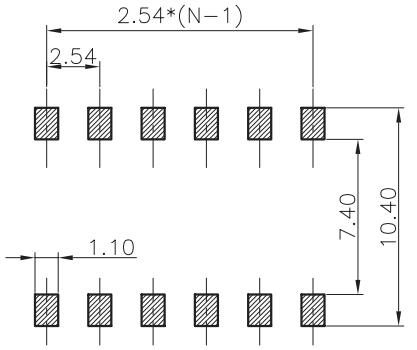
SMT TYPE



Positions	DIM.A
2	6.04
3	8.58
4	11.12
5	13.60
6	16.20
7	18.74
8	21.28
9	23.82
10	26.36



V/T TYPE



SMT TYPE

RECOMMEND P.C.B LAYOUT  
Tolerance±0.05  
N: Number of contacts/2

GENERAL TOLERANCE		ANGLE TOLERANCE		PROJECTION		TITLE	SWITCH PITCH 2.54mm SMT TYPE	
X.	±0.60	X.	±5°	UNITS		mm		
.X	±0.38	.X	±3°	SHEET SIZE	A4	SERIES		
.XX	±0.25	.XX	±2°					
DRAWING TYPE		CUSTOMER						
SCALE		1:1	SHEET	1 OF 1				
DRAWING NO.								