

产品规格书

版本: XA

日期: 2018-08-09

产品名称: RJ45-10 系列连接器

审批	校对	制作
李志荣	梁楠	郑亮亮

- 物料名称: RJ45-10 连接器



- 标准额定值

Item[项目]	Standard[规格]
Rated voltage[额定电压]	AC 42Vrms maximum
Rated current[额定电流]	1.2A
Operating temperature[使用温湿度环境]	-40℃~+80℃, 85% RH Max
Storage temperature[储存温湿度环境]	-40℃~+80℃, 85% RH Max
Wire specifications[线材规格]	0.15mm ² ~0.2mm ² /26-24AWG
Wire diameter range [线径范围]	Φ 5.5-Φ 7mm

- 试验条件

除非特别说明之外,一般试验及测量将于温度15~35℃,相对湿度25~85%,大气压力86~106kPa之条件下完成,但若于上述条件下有任何影响判定值的疑虑,可考量在温度20±2℃,相对湿度60~70%,大气压力86~106kPa之条件下完成试验。

- 技术参数

- 电气性能

NO. 编号	Item/项目	Test Method/试验方法	Requirement/性能要求
1.1	Contact Resistance [接触阻抗]	Mate connectors, Measure by dry circuit,20mV Max,100mA [公母对插后测试] {EIA-364-23}	40mΩ Max (initial)
1.2	Insulation Resistance [绝缘阻抗]	Unmated connectors, apply 500V DC between adjacent terminal or ground. [公母不对插,对相邻端子施加 500V DC 电压测试] {EIA-364-21}	500MΩ Min
1.3	Withstanding [耐电压]	Unmated connectors, apply 1000V AC for 1 minute between adjacent terminal or ground. [公母对插前对各端子施加 1000V AC 电压持续 1 分] {EIA-364-20}	No Breakdown 无击穿 Current Leakage: <0.5mA

■ 机械特性:

NO. 编号	Item/项目	Test Method/试验方法	Requirement/性能要求
2.1	Insertion force [插入力]	Measure mating force necessary to mate connector. Operation speed:12.5mm/minute [测试一组公母对插之连接器所需之插入力,测试速度 12.5mm/分钟] {EIA-364-13}	22.25N {2.27kgf} Max
2.2	Withdrawal force [拔出力]	Measure unmating force necessary to mate connector. Operation speed:12.5mm/minute [测试一组公母对插之连接器所需之拔出力,测试速度 12.5mm/分钟] {EIA-364-13}	
2.3	Normal force [正向力]	Measurements done in assembled connector, with nominal deflection, 5 samples of each unique contact. {EIA-364-04}	0.1N min
2.4	Retention Force 保持力	Perform a forced disassembly axial load to each contact at a maximum rate of 25.4 millimeters (1.0 inch) per minute until The contact retention features fail and allow the contact to become dislodged from t proper position in the housing. Reference toEIA-364-29 Method C - Test to destruction	5N min

NO. 编号	Item/项目	Test Method/试验方法	Requirement/性能要求	
2.5	Durability [耐久性]	Mated and unmated connectors up to 750 cycles at a maximum rate of 200 cycles per hour [测试连接器在最大 200 次/小时的插拔速度下必须承受 750 次的插拔循环] {EIA-364-09}	Appearance 外观	NO damage 不可破坏
			Contact Resistance 接触阻抗	40mΩ Max
			Insertion force [插入力]	
			Withdrawal force [拔出力]	
2.6	Vibration [振动测试]	Amplitude:1.52mm. Sweep time:50~2000~50Hz Duration:10 minutes in each(total of 30 minutes)X,Y,Z axes. [振幅: 1.52mm, 振动频率: 50~2000~50Hz, 振动时间: X·Y·Z 轴各 10 分钟共计 30 分钟] {EIA-364-28 Test condition V test letter A}	Appearance 外观	NO damage 不可破坏
			Discontinuity	1 Microsecond Max.
2.7	Mechanical Shock 机械冲击测试	Pulse width: 11 msec; Mate connectors to 490m/s ² 50g' s half-sine shock pulses of 11ms duration. Three shocks in each direction applied along three mutually perpendicular planes for a total of 18 shocks. 脉冲宽度: 11 毫秒; 对插连接器, 每个方向 490m/s ² 50g 三次垂直的冲击共 18 次冲击; {EIA 364-27B}	Appearance 外观	NO damage 不可破坏
			Contact Resistance 接触阻抗	40mΩ Max
SPECNO.:20170610		REV.: XA	ECN NO. :	
			PAGE :	3/6

■环境特性:

NO. 编号	Item/项目	Test Method/试验方法	Requirement/性能要求	
3.1	Humidity test [耐湿性测试]	Temperature: 40±2℃ Relative Humidity: 90~95% Duration: 4 cycles (96 hours) Upon completion of the test, specimens conditioned at ambient room conditions for 1 [温度在 40±2℃, 相对湿度 90~95%, 持续 96 试验后, 连接器于室温中放置 1~2 小时再测试。 {EIA-364-31 Test condition A method III}]	Appearance 外观	NO damage 不可破坏
			Contact Res 接触阻抗	40mΩ Max
			Insulation Resistance 绝缘阻抗	100MΩ Min
			Withstandin Voltage 耐电压	No breakdow 无击穿
3.2	Salt mist spray [盐水喷雾测试]	Salt concentration: 5%±1% Temperature: 35±2℃; Testing time: 24±2 hours ,After salt is removed by running water and a drop is removed, it is measured. [盐水比重: 5%±1%, 温度: 35±2℃, 试验时间 24±2 小时, 试验后用清水将残留盐份清洗, 清除后, 方可再测试其它值] {EIA-364-26A, condition A}	NO damage Appearance shall not be extremely rust. 不可破坏 外观无腐蚀生锈	
3.3	Thermal shock [冷热冲击测试]	Mate connentors together and perform the test as follows. 10 cycle of: A) -55℃ for 30 minutes; B) +85℃ for 30 minutes [将连接器做 10 个循环, 每个循环条件为: -55℃, 30 分钟; +85℃, 30 分钟] {EIA-364-32, Condition I}	Appearance 外观	NO damage 不可破坏
			Contact Res 接触阻抗	40mΩ Max
3.4	Heat test [耐热性测试]	The connector is exposed to 70±2℃ atmosphere for 96 hours. After testing it shall be left alone for 1 to 2 hours in room ambient. [将连接器置于 70±2℃ 的温度环境下, 时间 96 小时; 结束后将其放置于室温下 1~2 小时再测试其他值]	Appearance 外观	NO damage 不可破坏
			Contact Res 接触阻抗	40mΩ Max
3.5	Cold test [耐寒性测试]	The connector is exposed to -40±2℃ atmosphere for 96 hours. After testing it shall be left alone for 1 to 2 hours in room ambient. [将连接器置于 -40±2℃ 的温度环境下, 时间 96 小时; 结束后将其放置于室温下 1~2 小时再测试其他值]	Appearance 外观	NO damage 不可破坏
			Contact Res 接触阻抗	40mΩ Max

3.6	Waterproof Test	IEC 60529, IP65 1. The connector is mounting with a sealing 2. Test box which the plug-in hole is opening. 3. Completely immerse the full test boxes into water. 4. The connector plug-in hole is located 1000 mm below the surface of the water. 5. Under water test duration is 30 min. 6. After immersion, allowed dry the receptacle plug-in hole by pressure air before dielectric withstanding voltage test.	No water permeated into the test boxes by visual inspection after test.
-----	-----------------	--	---

● **产品信息**

■ **简介**

此插座技术性能符合凌科电气企标；插座内置标准 8 针 RJ45 接口（符合 FCC、EIA、MIL、IEC、CNS 等标准），可与 8P8C 标准水晶头互配使用；插座与适配插头采用螺纹连接方式，操作方便、连接可靠、抗震动、耐冲击；插座与面板安装方式为方盘法兰安装，接触件与导线的端接采用焊接方式，接触件数量为 8 个。

■ **包装与储存**

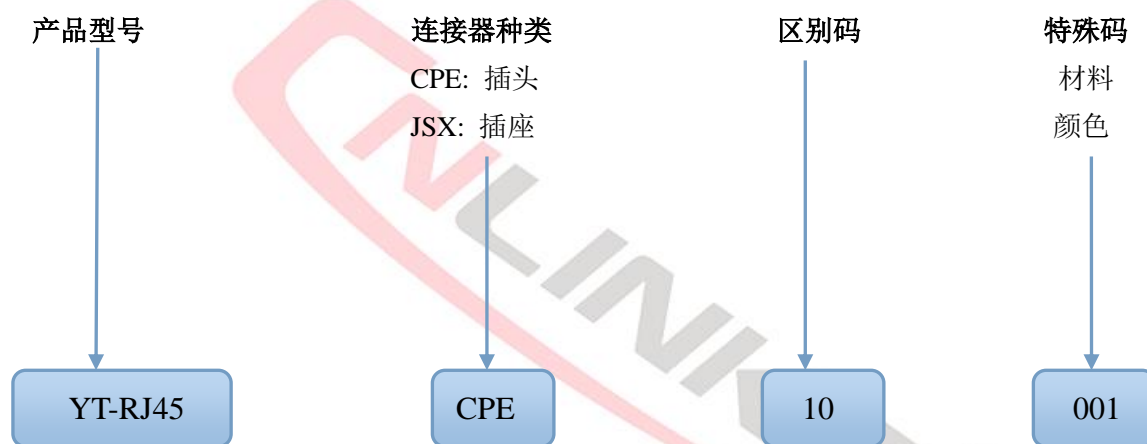
产品采用自封袋包装，箱内应有装箱单，其上注明产品名称、型号、批号、内装盒数及产品数。包装好的产品应贮放在环境温度为-40℃ ~ +80℃，相对湿度不大于 85%，周围空气中无酸性、碱性等腐蚀性气体的库房内。

■ **互配关系**

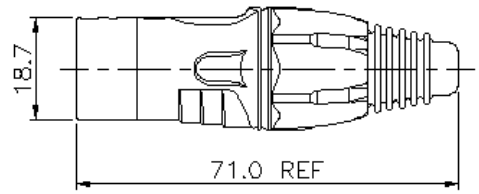
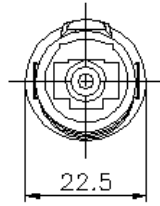
配用连接器：RJ45-10 连接器（公头）

■ **适用标准：**符合 TIA/EIA 568、MIL、IEC、CNS 等标准

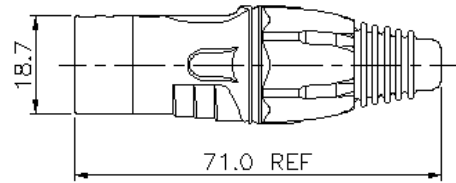
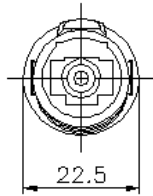
编码规则



● 外形尺寸



YT-RJ45-CPE-10-001 公头



YT-RJ45-CPE-10-002 公头