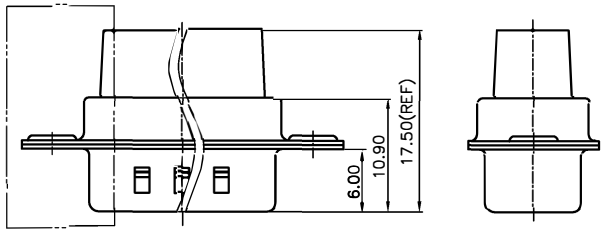
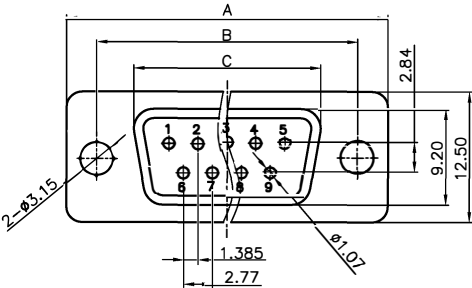
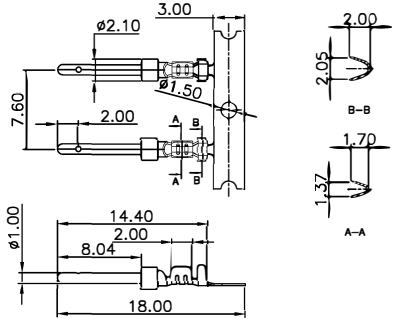


REV.	DESCRIPTION	DRAWN	CHECKED	APPROVED
A	NEW RELEASE	YCH 07/07/07	~	LJC 07/07/07
B	整理图面	YCH 05/21/08	~	

Male

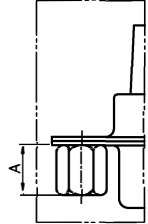


Male terminal

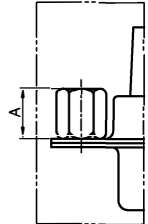


- NOTES:
- ELECTRICAL CHARACTERISTICS:
 - CONTACT RESISTANCE: 20m Ω Max.INITIAL.
 - DIELECTRIC WITHSTANDING VOLTAGE:500V AC(rms) FOR 1 MINUTE.
 - INSULATION RESISTANCE:1000M Ω Min.
 - MECHANICAL CHARACTERISTICS:
 - DURABILITY: 300 CYCLES.
 - ENVIRONMENT CHARACTERISTICS:
 - OPERATING TEMPERATURE:-40°C~+105°C.
 - APPLICATION WIRE AWG:#20-24.
 - PRODUCT NUMBER CODE:

- DS1036-01 - XX X X X X X X
- SCREW DIM. A
 S: Standard(W/O nut)
 1: 3.00 2: 4.00
 3: 4.50 4: 5.00
 5: 5.50 6: 5.80
- SCREW TYPE
 S: Standard(W/O nut)
 1: CC TYPE
 2: CS TYPE
- SHELL PLATING
 T:FORNT&BACK SHELL TIN
 N:FORNT SHELL NICKEL,
 BACK SHELL TIN
- CONTACT PLATING
 0:SELECTIVE GOLD FLASH
 8:FULL GOLD FIASH
- HOUSING COLOR
 U:BLUE B:BLACK
- CONNECTOR TYPE
 M:MALE F:FEMALE
- No.OF CONTACTS
 09:9pos 15:15pos
 25:25pos 37:37pos



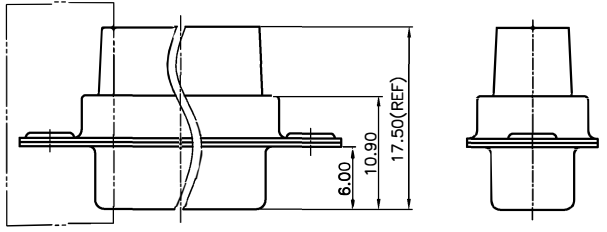
CC TYPE



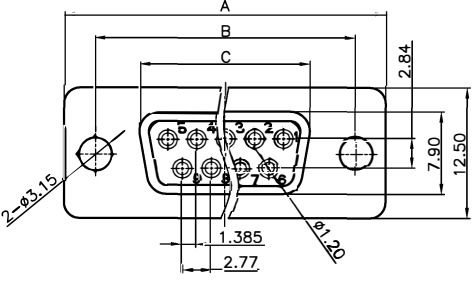
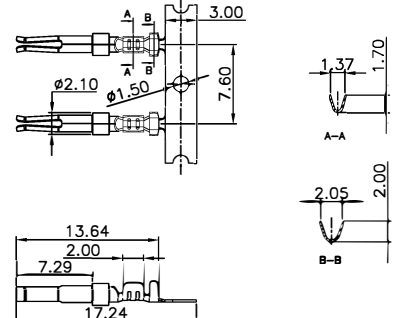
CS TYPE

Position	A ± 0.2	B ± 0.2	C ± 0.2	
			Male	Female
9P	30.80	24.99	17.90	16.33
15P	39.14	33.32	26.50	24.66
25P	53.04	47.04	40.00	38.38
37P	69.32	63.50	56.50	54.84

Female



Female terminal



GENERAL TOLERANCE	ANGLE TOLERANCE
X. ± 0.60	X. $\pm 3^\circ$
.X ± 0.38	.X $\pm 2^\circ$
.XX ± 0.25	.XX $\pm 1^\circ$

PROJECTION	TITLE
UNITS mm	D-SUB CRIMP TYPE
SHEET SIZE A4	SERIES DS1036-01 SERIES

DRAWING TYPE	CUSTOMER
SCALE 1:1	SHEET 1 OF 1
DRAWING NO. C-DS1036-01-XXXXXXX	

