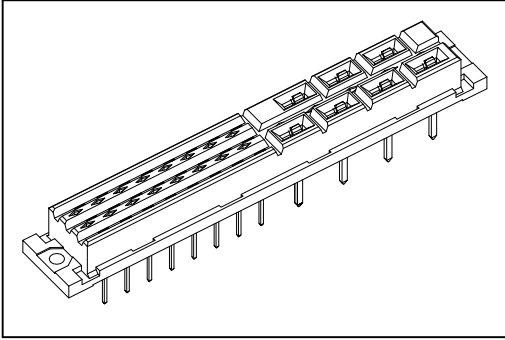


9001 Series

DIN41612 Mixed Style H7/F24 Female



Features:

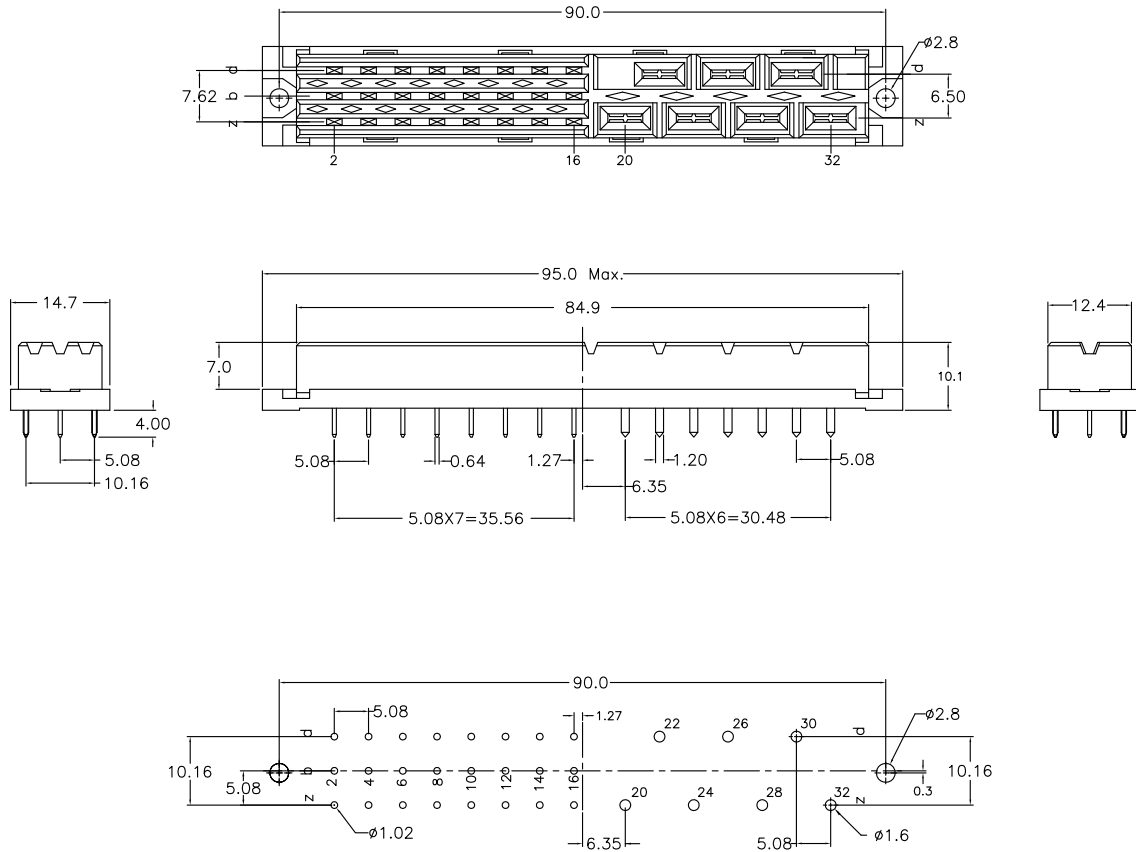
- * Power connectors.
- * Mates with 9001-65311C.

Material:

Housing: Thermoplastic Polyester Glass Filled UL94V-0.
 Contacts: Copper Alloy.

Electrical Characteristics:

Current Rating: 5.6 A / 15 A @20°C.
 Dielectric Withstanding Voltage: F Type AC 1550V.
 H Type AC 3100V.
 Insulator Resistance: 1000MΩ min.
 Contact Resistance: F Type 15mΩ max.
 H Type 8mΩ max.
 Operating Temperature: -55°C ~+125°C.



P.C. Board Layout

Ordering information

<u>9001-</u>	<u>66</u>	<u>31</u>	<u>1</u>	<u>C</u>	<u>00</u>	<u>L1</u>	<u>A</u>
Series	6: Female	Position	1: Dip Length	C: z20~z32 Tin Plating Other With Selective Gold Plated	00: G/F	Blank: W/O Lock L1: With Lock	A: Tray Package

See Page CA03

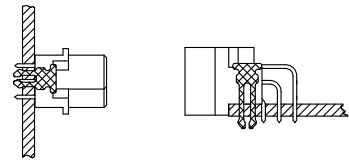
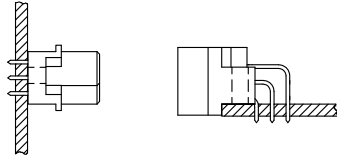
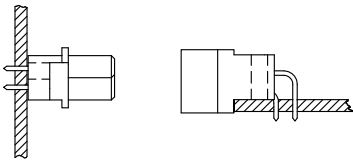
9001 Series

DIN41612 Mating Introduce

2 Row insulator
 B (Standard mounting)
 Mounting axis
 of the connector

3 Row insulator
 C (Standard mounting)
 Mounting axis
 of the connector

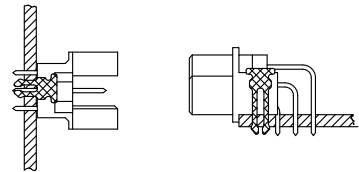
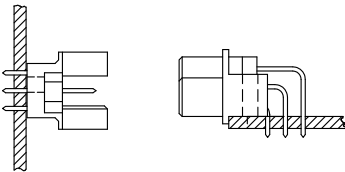
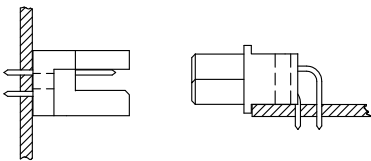
Board lock available
 L1=P.C.B. Thickness 1.6 ~2.0 mm
 L2=P.C.B. Thickness 2.8 ~3.2 mm



Q (Reverse mounting)
 Mounting axis
 of the connector

R (Reverse mounting)
 Mounting axis
 of the connector

Board lock available
 L1=P.C.B. Thickness 1.6 ~2.0 mm
 L2=P.C.B. Thickness 2.8 ~3.2 mm



I.D.C. Type Ribbon Cable

Press Fit Type
 2 Row insulator

3 Row insulator

2 Row insulator

3 Row insulator

