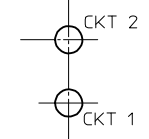
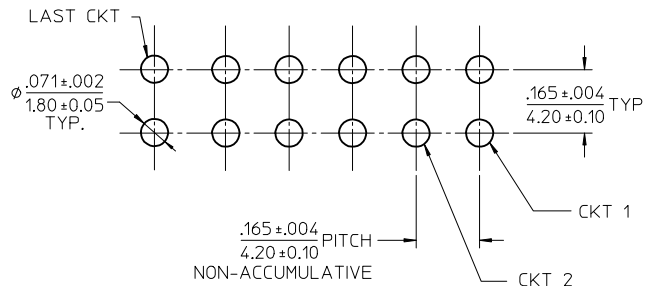
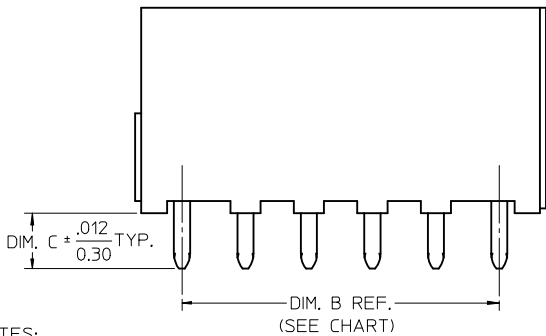
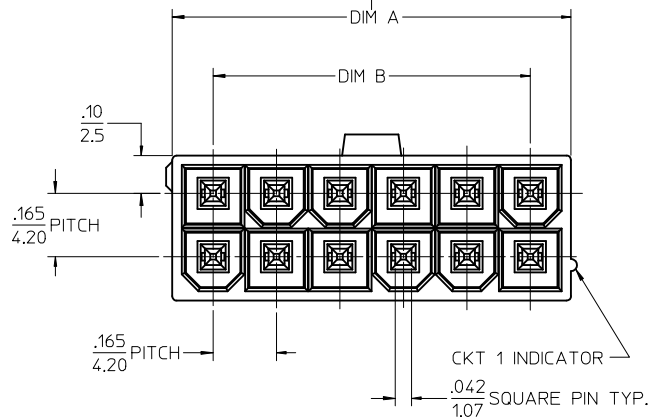
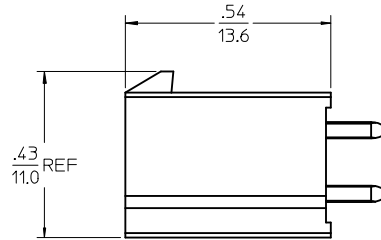


ISOMETRIC VIEW  
(12 CKT - SHOWN)

CKT SIZE	DIM. A	DIM. B
02	0.21/5.4	NA
04	0.38/9.6	0.165/4.20
06	0.54/13.8	0.331/8.40
08	0.71/18.0	0.496/12.60
10	0.87/22.2	0.661/16.80
12	1.04/26.4	0.827/21.00
14	1.21/30.6	0.992/25.20
16	1.37/34.8	1.160/29.40
18	1.54/39.0	1.323/33.60
20	1.70/43.2	1.488/37.80
22	1.87/47.4	1.654/42.00
24	2.03/51.6	1.819/46.20



LAYOUT FOR  
4-24 CIRCUITS

LAYOUT FOR  
2 CIRCUIT

RECOMMENDED PCB HOLE LAYOUT COMPONENT SIDE

- NOTES:
- MATERIALS:  
HOUSING - GLASS FILLED LCP UL94V-0, COLOR: SEE CHART  
TERMINAL - BRASS
  - TERMINAL PLATING:  
TIN= .000100/0.00254 MIN. MATTE TIN OVER  
.000050/0.00127 MIN. NICKEL  
GOLD=.000030/0.00076 MIN. SELECT GOLD OVER  
.000100/0.00254 MIN. SELECT MATTE TIN  
OVER .000050/0.00127 MIN. NICKEL OVERALL.
  - PRODUCT SPECIFICATION: PS-46207-001
  - PACKAGING SPECIFICATION: TRAY PACK PER: PK-46207-001 UNLESS NOTED.  
TAPE AND REEL PACK PER: PK-46207-002
  - PART CONFORMS TO CLASS "B" REQUIREMENTS OF COSMETIC SPECIFICATION PS-45499-002.
  - PARTS ARE NOT DESIGNED FOR CURRENT SHARING.
  - CONNECTORS ARE NOT TO BE MATED AND UNMATED WHILE CIRCUITS ARE LIVE.

ADD GOLD P/N'S EC NO: UCP2014-3063 DRW: NGUYEN 2014/01/24 CHKD: JBELL 2014/01/24 APPR: FSMITH 2014/02/14	QUALITY SYMBOLS ▽=0 ▽=0 ▽=0	GENERAL TOLERANCES (UNLESS SPECIFIED)	DIMENSION STYLE IN/MM	SCALE 4:1	DESIGN UNITS METRIC	THIRD ANGLE PROJECTION
		4 PLACES ± --- ± --- 3 PLACES ± --- ± .005 2 PLACES ± 0.13 ± .010 1 PLACE ± 0.25 ± --- 0 PLACE ± --- ± ---	DRAWN BY LSCHMIDT	DATE 2007/12/14	CHECKED BY JBELL	DATE 2007/12/17
REV C2	DESCRIPTION	ANGULAR ±1/2°	MATERIAL NO. SEE CHART	APPROVED BY FSMI THROEMER	DATE 2007/12/18	DOCUMENT NO. SD-46207-002
DRAFT WHERE APPLICABLE MUST REMAIN WITHIN DIMENSIONS		SIZE C	THIS DRAWING CONTAINS INFORMATION THAT IS PROPRIETARY TO MOLEX INCORPORATED AND SHOULD NOT BE USED WITHOUT WRITTEN PERMISSION			

GOLD PLATING		COLOR=BLACK			
CKT SIZE	TAPE & REEL MATERIAL NUMBER	TRAY PACK MATERIAL NUMBER	DIM. C	PCB THK.	
02	462078002	* 462076002	* 0.144/3.66	0.062	
04	462078004	* 462076004	* 0.144/3.66	0.062	
06	462078006	* 462076006	* 0.144/3.66	0.062	
08	462078008	* 462076008	* 0.144/3.66	0.062	
10	462078010	* 462076010	* 0.144/3.66	0.062	
12	462078012	* 462076012	* 0.144/3.66	0.062	
14	462078014	* 462076014	* 0.144/3.66	0.062	
16	462078016	* 462076016	* 0.144/3.66	0.062	
18	462078018	* 462076018	* 0.144/3.66	0.062	
20	462078020	* 462076020	* 0.144/3.66	0.062	
22	462078022	* 462076022	* 0.144/3.66	0.062	
24	462078024	* 462076024	* 0.144/3.66	0.062	
02					
04					
06					
08					
10					
12					
14					
16					
18					
20					
22					
24					

TRAY PACKAGED PER PK-5569-003

TIN PLATING		COLOR=BLACK			
CKT SIZE	TAPE & REEL MATERIAL NUMBER	TRAY PACK MATERIAL NUMBER	DIM. C	PCB THK.	
02	462074002	* 462071002	* 0.144/3.66	0.062	
04	462074004	* 462071004	* 0.144/3.66	0.062	
06	462074006	* 462071006	* 0.144/3.66	0.062	
08	462074008	* 462071008	* 0.144/3.66	0.062	
10	462074010	* 462071010	* 0.144/3.66	0.062	
12	462074012	* 462071012	* 0.144/3.66	0.062	
14	462074014	* 462071014	* 0.144/3.66	0.062	
16	462074016	* 462071016	* 0.144/3.66	0.062	
18	462074018	* 462071018	* 0.144/3.66	0.062	
20	462074020	* 462071020	* 0.144/3.66	0.062	
22	462074022	* 462071022	* 0.144/3.66	0.062	
24	462074024	* 462071024	* 0.144/3.66	0.062	
02		462071102	* 0.176/4.46	0.093	
04		462071104	0.176/4.46	0.093	
06		462071106	0.176/4.46	0.093	
08		462071108	0.176/4.46	0.093	
10		462071110	0.176/4.46	0.093	
12		462071112	0.176/4.46	0.093	
14		462071114	* 0.176/4.46	0.093	
16		462071116	* 0.176/4.46	0.093	
18		462071118	* 0.176/4.46	0.093	
20		462071120	* 0.176/4.46	0.093	
22		462071122	* 0.176/4.46	0.093	
24		462071124	0.176/4.46	0.093	
02		462071202	* 0.207/5.26	0.125	
04		462071204	0.207/5.26	0.125	
06		462071206	0.207/5.26	0.125	
08		462071208	0.207/5.26	0.125	
10		462071210	0.207/5.26	0.125	
12		462071212	0.207/5.26	0.125	
14		462071214	* 0.207/5.26	0.125	
16		462071216	* 0.207/5.26	0.125	
18		462071218	* 0.207/5.26	0.125	
20		462071220	* 0.207/5.26	0.125	
22		462071222	* 0.207/5.26	0.125	
24		462071224	0.207/5.26	0.125	

\* DESIGNATES PART NOT RELEASED. CONTACT FACTORY FOR AVAILABILITY.

\* DESIGNATES PART NOT RELEASED. CONTACT FACTORY FOR AVAILABILITY.

SEE SHEET 1 EC NO: UCP2014-3063 DRAWN: NGUYEN 2014/01/24 CHKD: JBELL 2014/01/24 APPR: FSMITH 2014/02/14	QUALITY SYMBOLS	GENERAL TOLERANCES (UNLESS SPECIFIED)	DIMENSION STYLE	SCALE	DESIGN UNITS	THIRD ANGLE PROJECTION
	▽=0	mm INCH	IN/MM	1:1	METRIC	
	▽=0	4 PLACES ± --- ± ---	DRAWN BY DATE	TITLE		
	▽=0	3 PLACES ± --- ±.005	LSCHMIDT 2007/12/14	MINI-FIT RTC HI-TEMP VERTICAL HEADER IN LCP, W/O PCB PEGS		
	2 PLACES ± 0.13 ±.010	CHECKED BY DATE	molex			
	1 PLACE ± 0.25 ± ---	JBELL 2007/12/17	SD-46207-002			
	0 PLACE ± --- ± ---	APPROVED BY DATE	SHEET NO. 2 OF 3			
	ANGULAR ±1/2°	FSMI THROEMER 2007/12/18	INCORPORATED AND SHOULD NOT BE USED WITHOUT WRITTEN PERMISSION			
	DRAFT WHERE APPLICABLE MUST REMAIN WITHIN DIMENSIONS	MATERIAL NO.				
		SEE CHART				

		TIN PLATING		COLOR=NATURAL	
CKT SIZE	TAPE & REEL MATERIAL NUMBER	TRAY PACK MATERIAL NUMBER	DIM. C	PCB THK.	
02	462074302	* 462071302	* 0.144/3.66	0.062	
04	462074304	* 462071304	* 0.144/3.66	0.062	
06	462074306	* 462071306	* 0.144/3.66	0.062	
08	462074308	* 462071308	* 0.144/3.66	0.062	
10	462074310	* 462071310	* 0.144/3.66	0.062	
12	462074312	* 462071312	* 0.144/3.66	0.062	
14	462074314	* 462071314	* 0.144/3.66	0.062	
16	462074316	* 462071316	* 0.144/3.66	0.062	
18	462074318	* 462071318	* 0.144/3.66	0.062	
20	462074320	* 462071320	* 0.144/3.66	0.062	
22	462074322	* 462071322	* 0.144/3.66	0.062	
24	462074324	* 462071324	* 0.144/3.66	0.062	
02			* 0.176/4.46	0.093	
04			* 0.176/4.46	0.093	
06			* 0.176/4.46	0.093	
08			* 0.176/4.46	0.093	
10			* 0.176/4.46	0.093	
12			* 0.176/4.46	0.093	
14			* 0.176/4.46	0.093	
16			* 0.176/4.46	0.093	
18			* 0.176/4.46	0.093	
20			* 0.176/4.46	0.093	
22			* 0.176/4.46	0.093	
24			* 0.176/4.46	0.093	
02			* 0.207/5.26	0.125	
04			* 0.207/5.26	0.125	
06			* 0.207/5.26	0.125	
08			* 0.207/5.26	0.125	
10			* 0.207/5.26	0.125	
12			* 0.207/5.26	0.125	
14			* 0.207/5.26	0.125	
16			* 0.207/5.26	0.125	
18			* 0.207/5.26	0.125	
20			* 0.207/5.26	0.125	
22			* 0.207/5.26	0.125	
24			* 0.207/5.26	0.125	

\* DESIGNATES PART NOT RELEASED.  
CONTACT FACTORY FOR AVAILABILITY.

SEE SHEET 1 EC NO: UCP2014-3063 DRAWN: NGUYEN 2014/01/24 CHKD: BELL 2014/01/24 APPR: FSMITH 2014/02/14	QUALITY SYMBOLS	GENERAL TOLERANCES (UNLESS SPECIFIED)	DIMENSION STYLE	SCALE	DESIGN UNITS	THIRD ANGLE PROJECTION
	▽=0	4 PLACES ± --- ± ---	IN/MM	1:1	METRIC	MINI-FIT RTC HI-TEMP VERTICAL HEADER IN LCP, W/O PCB PEGS <b>molex</b>
	▽=0	3 PLACES ± --- ± .005	mm			
	▽=0	2 PLACES ± 0.13 ± .010	INCH			
▽=0	1 PLACE ± 0.25 ± ---					
REV	DESCRIPTION	0 PLACE ± --- ± ---	DRAWN BY DATE	TITLE		
C2		ANGULAR ±1/2°	LSCHMIDT 2007/12/14	SEE CHART	SD-46207-002	SHEET NO. 3 OF 3
		DRAFT WHERE APPLICABLE MUST REMAIN WITHIN DIMENSIONS	CHECKED BY DATE	THIS DRAWING CONTAINS INFORMATION THAT IS PROPRIETARY TO MOLEX INCORPORATED AND SHOULD NOT BE USED WITHOUT WRITTEN PERMISSION		
			JBELL 2007/12/17			
			APPROVED BY DATE			
			FSMI THROEMER 2007/12/18			
			MATERIAL NO.			
			DOCUMENT NO.			