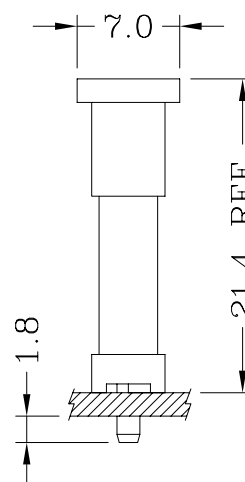


Assembly Layout



Specifications:

Poles	1~6 Poles
Pitch between poles	7.5-5.0mm
Rated Voltage	250V AC,DC
Rated Current	5A (AWG #18)
Withstand Voltage	1,500V AC/minute
Contact Resistance	10mΩ (MAX.)
Insulation Resistance	1,000MΩ (MIN)
Temperature Range	-25°C~+120°C*
Applicable P.C.B. Thickness	1.6mm
Applicable P.C.B. Hole dia.	φ1.75±0.05mm
Applicable Wire Range	AWG #18~#24

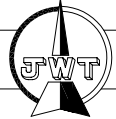
\*: Including terminal temperature rise.

UL: Recognized No. E144544

CSA: Certified No. LR78619

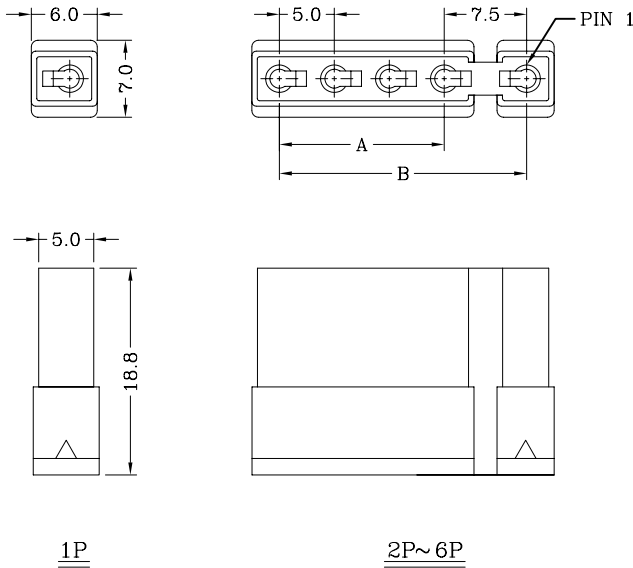


# A1561 Series 7.50-5.00mm pitch crimp terminal socket



## Features:

- \* Available in 1 through 6 circuits
- \* Material: Nylon 66 UL 94V-0 or UL 94V-2 (Natural - White)
- \* Suitable for JWT A1561 series terminal
- \* Mates with JWT A1561 series wafer



## Dimensional & Ordering Information:

Circuits	Part No	Dimensions		Pcs/Bag
		A	B	
1	A1561H0*-1P*	—	—	1000
2	A1561H0*-2P*	—	7.5	1000
3	A1561H0*-3P*	5.0	12.5	1000
4	A1561H0*-4P*	10.0	17.5	1000
5	A1561H0*-5P*	15.0	22.5	500
6	A1561H0*-6P*	20.0	27.5	500

A1561H0\*-\*P\*

1 2

NOTE: 1. 0: UL 94V-0

2: UL 94V-2

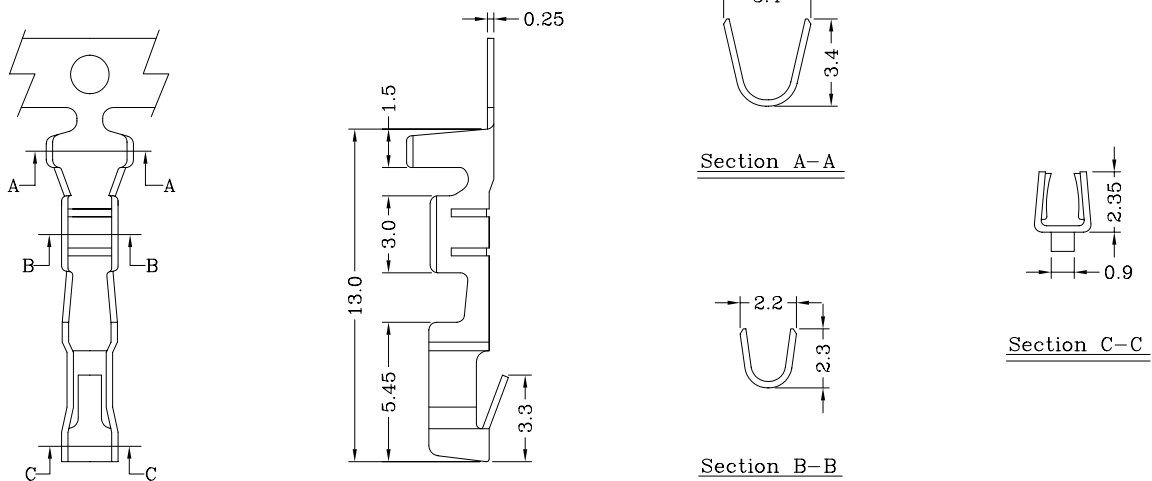
2. (Void): Standard Color(White)

A: Black color

# A1561 Series 7.50-5.00mm pitch crimp terminal

## Features:

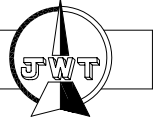
- \* Multi-contact point
- \* Used in JWT A1561 series socket



## Specifications & Ordering Information:

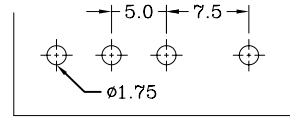
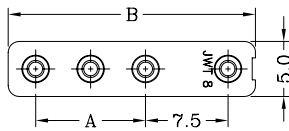
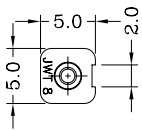
Part No	Wire Range	Insulation O.D.	Material	Finish	Qty/reel
A1561TOB-2	AWG #18~#24	2.45mm(max)	Brass	Tin-plated	6,000 PCS
A1561TOB-1	AWG #18~#24	2.45mm(max)	Brass	Nickel plated	6,000 PCS
A1561TOP-2	AWG #18~#24	2.45mm(max)	Phosphor bronze	Tin-plated	6,000 PCS

# A1561 Series 7.50-5.00mm pitch wafer

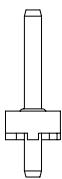


## Features:

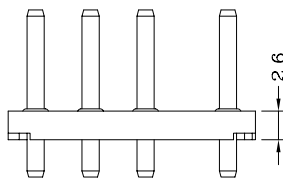
- \* Available in 1 through 6 circuits
- \* Material: Insulator: PBT UL 94V-0 with 30% GF (Black)  
Contact:  $\phi 1.56\text{mm}$  round pin, Brass Tin Plated
- \* Mates with A1561 series socket



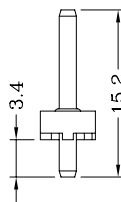
P.C.B. LAYOUT



1P



2P~6P



## Dimensional & Ordering Information :

Circuits	Part No	Dimensions		Pcs/Bag
		A	B	
1	A1561WV2- 1P	—	5.0	1000
2	A1561WV2- 2P	—	12.5	1000
3	A1561WV2- 3P	5.0	17.5	1000
4	A1561WV2- 4P	10.0	22.5	1000
5	A1561WV2- 5P	15.0	27.5	500
6	A1561WV2- 6P	20.0	32.5	500