

# 12V/5W dual power amplifier

## BA5406

The BA5406 is a dual-OTL monolithic power IC with two high-output, low-frequency power amplifiers. With a 12V power supply, it has a rated output of  $5W \times 2$  into a  $3\Omega$  load, and with a 9V power supply, it has a rated output of  $2.8W \times 2$  into a  $3\Omega$  load.

The BA5406 has good low-voltage characteristics, and the "pop" sound when power is applied is small. It generates little radio-band noise, and is ideal for use in stereo radio cassette players.

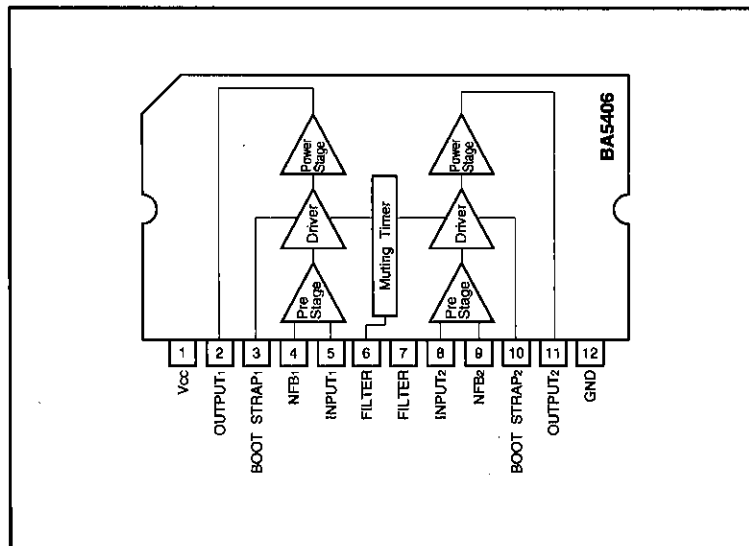
●Applications

Stereo radio cassette players, stereo component systems, and TVs.

●Features

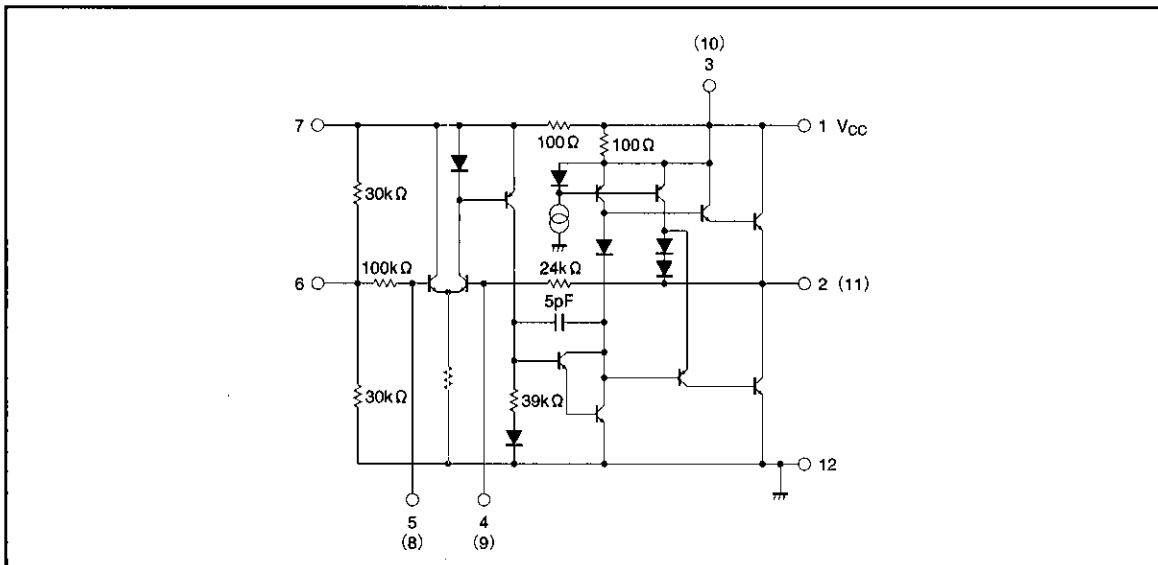
- |  |  |
|--|--|
| <ol style="list-style-type: none"> <li>1) Small "pop" noise.</li> <li>2) Good low voltage characteristics. Begins operating <math>V_{CC} = 5V</math> (typ.).</li> <li>3) Good channel balance.</li> <li>4) Good distortion characteristics (THD = 0.3% when <math>P_o = 0.5W</math>)</li> <li>5) Easy-to-mount 12-pin SIP-M package that requires little PCB space.</li> <li>6) The ripple filter pin (pin 6) can be used for muting (by setting it to ground potential).</li> </ol> | <ol style="list-style-type: none"> <li>7) Symmetrical pin layout simplifies PCB artwork.</li> <li>8) Package has low thermal resistance to simplify heatsink design.</li> <li>9) Built-in treble phase compensation capacitors.</li> <li>10) Low radio-band noise generated. Can be freely positioned in the set.</li> </ol> |
|--|--|

●Block diagram



Power amplifiers  
Low-frequency amplifiers

● Internal circuit diagram



● Absolute maximum ratings (Ta = 25°C)

Parameter	Symbol	Limits	Unit
Supply voltage	V <sub>CC</sub>	18*1	V
Power dissipation	P <sub>d</sub>	20*2	W
Operating temperature	T <sub>opr</sub>	-20~75	°C
Storage temperature	T <sub>stg</sub>	-30~125	°C
Junction temperature	T <sub>j</sub>	150	°C

\*1 No signal

\*2 Back metal temperature: 75°C.

● Recommended operating conditions (Ta = 25°C)

Parameter	Symbol	Min.	Typ.	Max.	Unit
Supply voltage	V <sub>CC</sub>	5	12	15	V

● Electrical characteristics (unless otherwise specified Ta = 25°C and V<sub>CC</sub> = 12V)

Parameter	Symbol	Min.	Typ.	Max.	Unit	Conditions
Quiescent circuit current	I <sub>Q</sub>	20	40	70	mA	V <sub>IN</sub> =0V <sub>rms</sub>
Closed-circuit voltage gain	G <sub>VC</sub>	43	46	49	dB	f=1kHz, V <sub>IN</sub> =-46dBm
Rated output 1	P <sub>OUT 1</sub>	4.0	5.0	—	W	f=1kHz, THD=10%, R <sub>L</sub> =3Ω
Rated output 2	P <sub>OUT 2</sub>	3.4	4.2	—	W	f=1kHz, THD=10%, R <sub>L</sub> =4Ω
Total harmonic distortion	THD	—	0.3	1.5	%	f=1kHz, P <sub>O</sub> =0.5W
Output noise voltage	V <sub>NO</sub>	—	0.6	1.0	mV <sub>rms</sub>	R <sub>g</sub> =10kΩ
Input resistance	R <sub>IN</sub>	50	100	—	kΩ	f=1kHz, V <sub>IN</sub> =5mV <sub>rms</sub>

● Measurement circuit

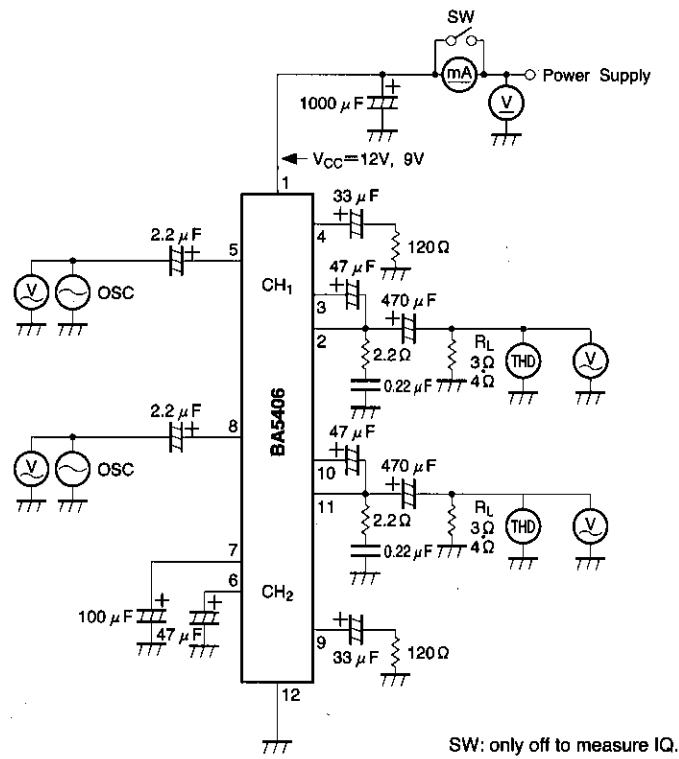


Fig. 1

● Application example

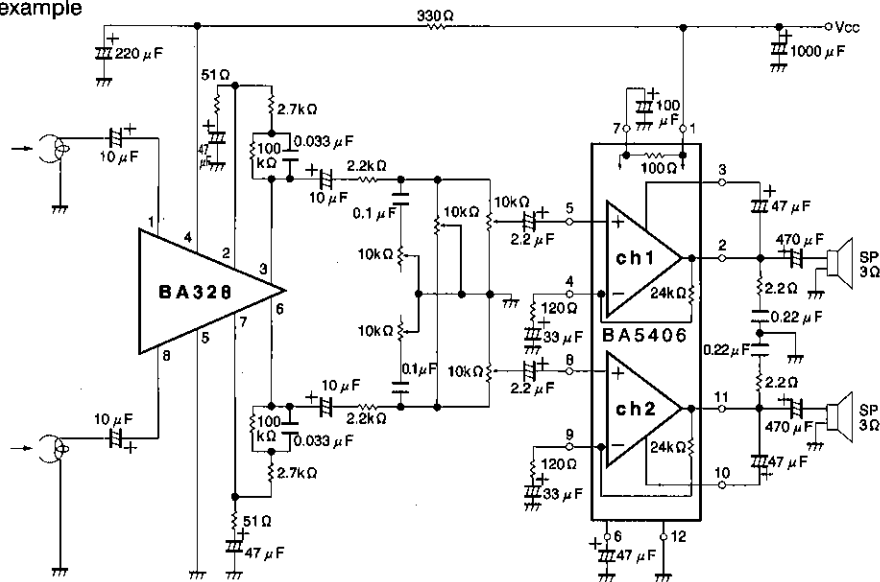


Fig. 2

Power amplifiers  
Low-frequency amplifiers

●Electrical characteristics curves

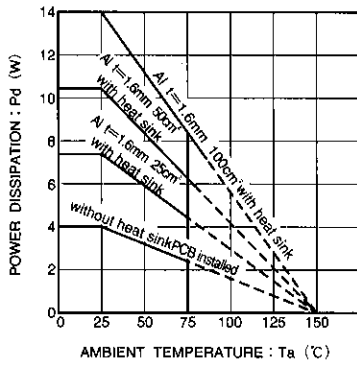


Fig. 3 Power dissipation vs. ambient temperature

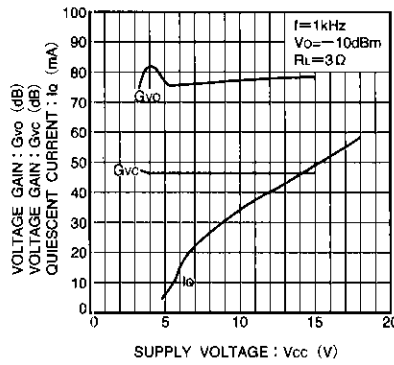


Fig. 4 Quiescent current and voltage gain vs. supply voltage

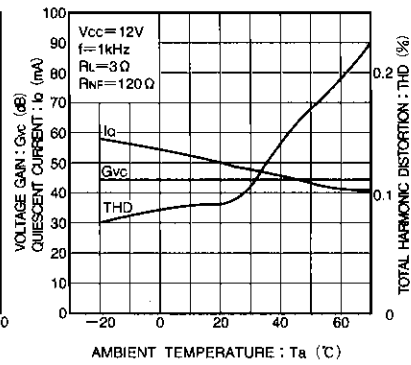


Fig. 5 Distortion, voltage gain and quiescent current vs. frequency

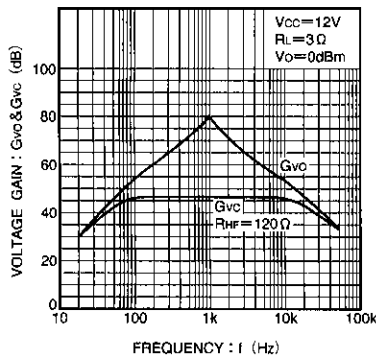


Fig. 6 Voltage gain vs. frequency

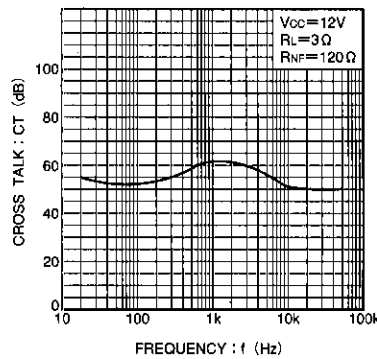


Fig. 7 Crosstalk vs. frequency

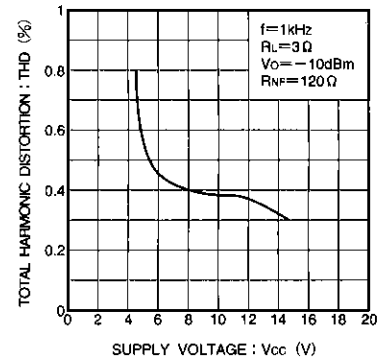


Fig. 8 Distortion vs. supply voltage

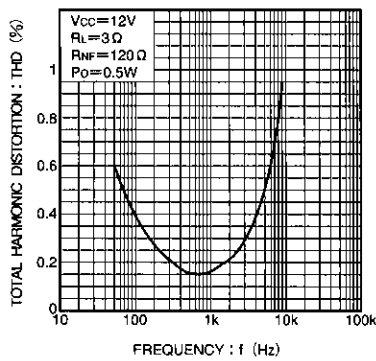


Fig. 9 Distortion vs. frequency

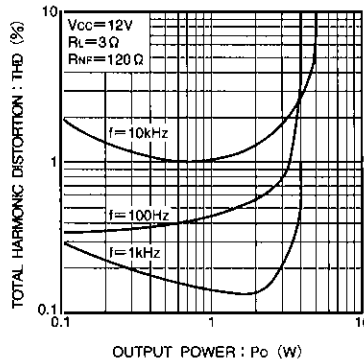


Fig. 10 Distortion vs. Output power

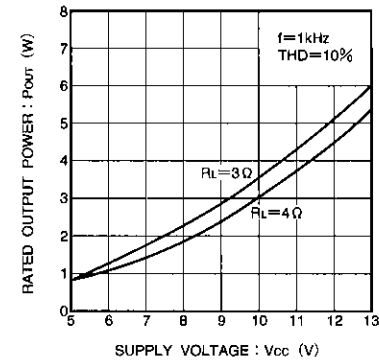


Fig. 11 Output power vs. supply voltage

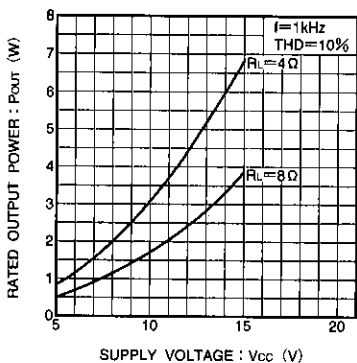


Fig. 12 Output power vs. supply voltage

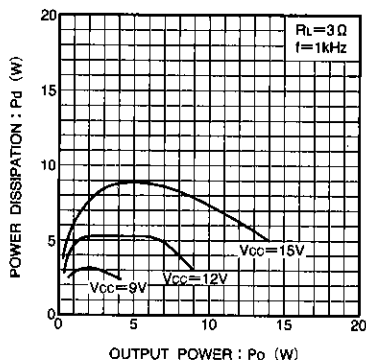


Fig. 13 Power dissipation vs. output power

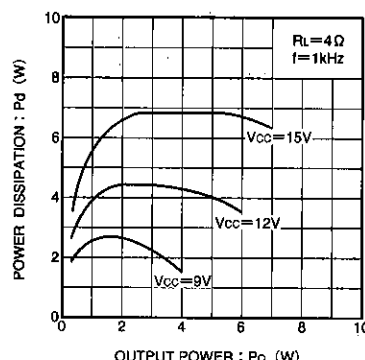


Fig. 14 Power dissipation vs. output power

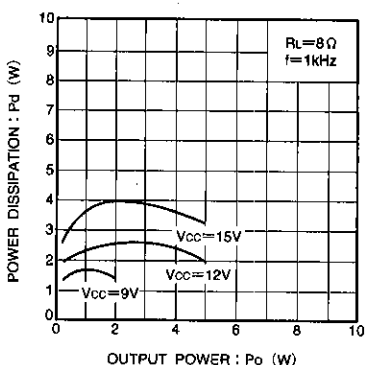


Fig. 15 Power dissipation vs. output power

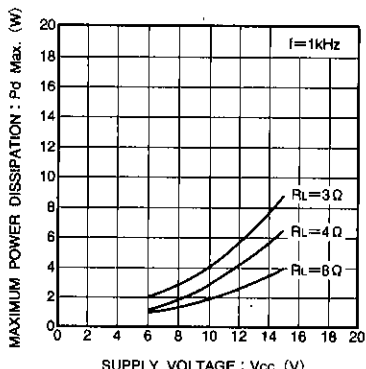


Fig. 16 Maximum power dissipation vs. supply voltage

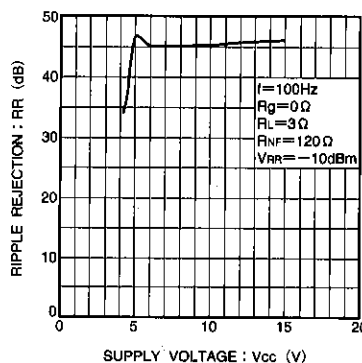
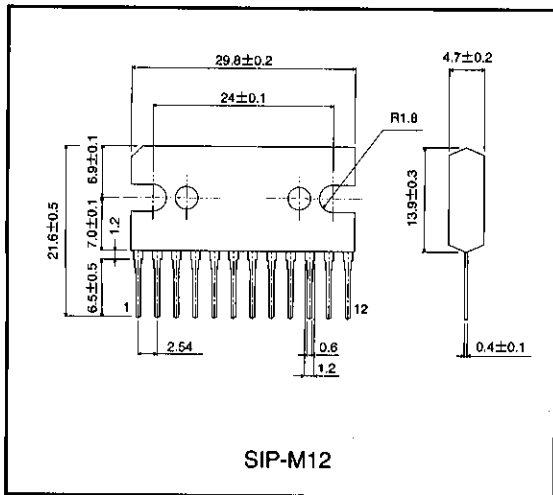


Fig. 17 Ripple rejection vs. supply voltage

● External dimensions (Unit: mm)



SIP-M12

Power amplifiers  
Low-frequency amplifiers

## Notes

- The contents described in this catalogue are correct as of March 1997.
- No unauthorized transmission or reproduction of this book, either in whole or in part, is permitted.
- The contents of this book are subject to change without notice. Always verify before use that the contents are the latest specifications. If, by any chance, a defect should arise in the equipment as a result of use without verification of the specifications, ROHM CO., LTD., can bear no responsibility whatsoever.
- Application circuit diagrams and circuit constants contained in this data book are shown as examples of standard use and operation. When designing for mass production, please pay careful attention to peripheral conditions.
- Any and all data, including, but not limited to application circuit diagrams, information, and various data, described in this catalogue are intended only as illustrations of such devices and not as the specifications for such devices. ROHM CO., LTD., disclaims any warranty that any use of such device shall be free from infringement of any third party's intellectual property rights or other proprietary rights, and further, assumes absolutely no liability in the event of any such infringement, or arising from or connected with or related to the use of such devices.
- Upon the sale of any such devices; other than for the buyer's right to use such devices itself, resell or otherwise dispose of the same; no express or implied right or license to practice or commercially exploit any intellectual property rights or other proprietary rights owned or controlled by ROHM CO., LTD., is granted to any such buyer.
- The products in this manual are manufactured with silicon as the main material.
- The products in this manual are not of radiation resistant design.

The products listed in this catalogue are designed to be used with ordinary electronic equipment or devices (such as audio-visual equipment, office-automation equipment, communications devices, electrical appliances, and electronic toys). Should you intend to use these products with equipment or devices which require an extremely high level of reliability and the malfunction of which would directly endanger human life (such as medical instruments, transportation equipment, aerospace machinery, nuclear-reactor controllers, fuel controllers, or other safety devices) please be sure to consult with our sales representatives in advance.

### ● Notes when exporting

- It is essential to obtain export permission when exporting any of the above products when it falls under the category of strategic material (or labor) as determined by foreign exchange or foreign trade control laws.
- Please be sure to consult with our sales representatives to ascertain whether any product is classified as a strategic material.